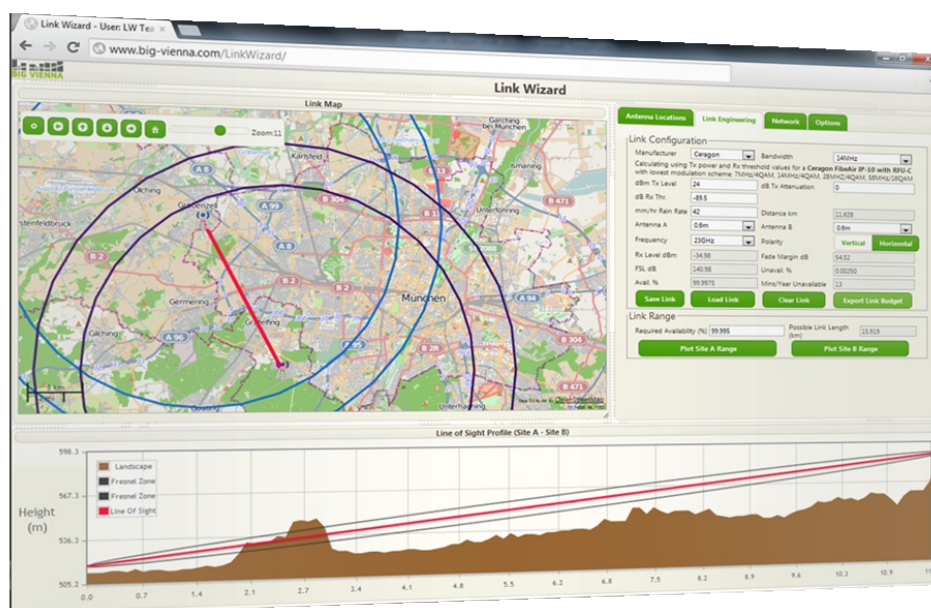


nomad Link Wizard

Product Sheet

 Free web app for initial microwave network link planning
 Try it now at www.big-vienna.com/LinkWizard



The Link Wizard is a free web app used by microwave engineers for initial link planning, based on its geographical interface, ease-of-use and configuration options. More than 600 radio links are checked on it each month!

Key Features

Plan radio links in this free web application with easy-to-use geographical interface

Quickly check link feasibility with line-of-sight (LOS), including fresnel zone

- Place links on the map by mouse click or enter address

- Supports network of sites, with network import

- Select and compare different manufacturer equipment

- Optimize link availability by adjusting radio parameters

- Including Rain-rate, Polarity, Attenuation etc.

- Export line-of-sight or link configuration for future reference

- Enables vendors to outsource basic link planning to partners

- Opportunities for advertising and to gather sales data from a global base

nomad Network Lifecycle Wizards

nomad has a number of innovative applications, targeting optimization of different processes along the network lifecycle: from Planning & Design, to Deployment, to Maintenance & Optimization, with network 'Swaps' also included. These applications are designed to be used by anyone, automating and accelerating much of the process. These are particularly effective in large installed bases, are easy to deploy and require no additional devices.

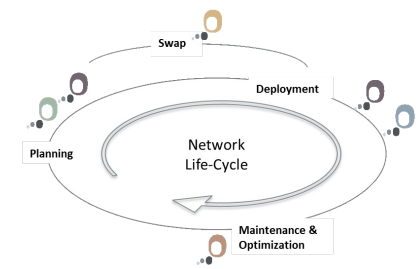


Figure 1. Network Lifecycle Diagram

Link Wizard

A Network Lifecycle Wizard targeting the planning phase, Link Wizard simplifies initial link planning, allowing you to discover microwave link line-of-sight and perform quick link feasibility audits, for free! A web application with an easy-to-use geographical interface, it runs in your browser, giving you the ability to check if line-of-sight exists between 2 points. You can then configure radio parameters, such as Bandwidth, Frequency, Polarity and Rain Rate, to achieve the required link availability. Manufacturer selection allows comparisons to be made between major brands of microwave transmission equipment. Once complete, the link budget and LOS chart can be exported and saved for future reference.

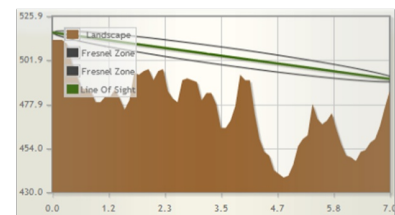


Figure 2. Line-of-Sight Chart

For Vendors

Easy-to-use, it can be used by anyone. Vendors can offer Link Wizard to business partners, transferring the cost and effort of initial link planning. Link Wizard also represents a platform to advertise on, as well as to gain valuable sales data, with links and data being produced by a global user base.

Benefits

Save time

Quick, simple planning process

Save money - free app, no license costs

Replace expensive applications for quick, small-scale link design

Simplicity allows any person to plan, not just experienced engineers

Help address channel business development by outsourcing link design to other stakeholders

Opportunities to promote your brand, equipment and services or gain access to potential sales data

Figure 3. Link Engineering Parameters

Business Intelligence Group Vienna is a network intelligence expert, designing software and performing integrations for network Operators and Vendors, targeting inefficiencies and revealing full network information. nomad is a mobile backhaul management OSS augmented by a BI layer. It is used as OEM software by leading operators to maximize transport network resource utilization, achieving cost and time savings throughout the network life-cycle. Layers of complex coding and algorithms collect and analyze network data from multiple technologies and equipment in real-time. nomad uses this data to generate easily digestible, measurable and actionable information, revealing KPIs, network inefficiencies and allowing for troubleshooting. Its architecture makes nomad cost-effective, easy to deploy and scalable. nomad has been deployed at



To discover exactly how nomad can optimize your network, contact us:

E: nomad@big-vienna.com
T: +43 1277 225934

